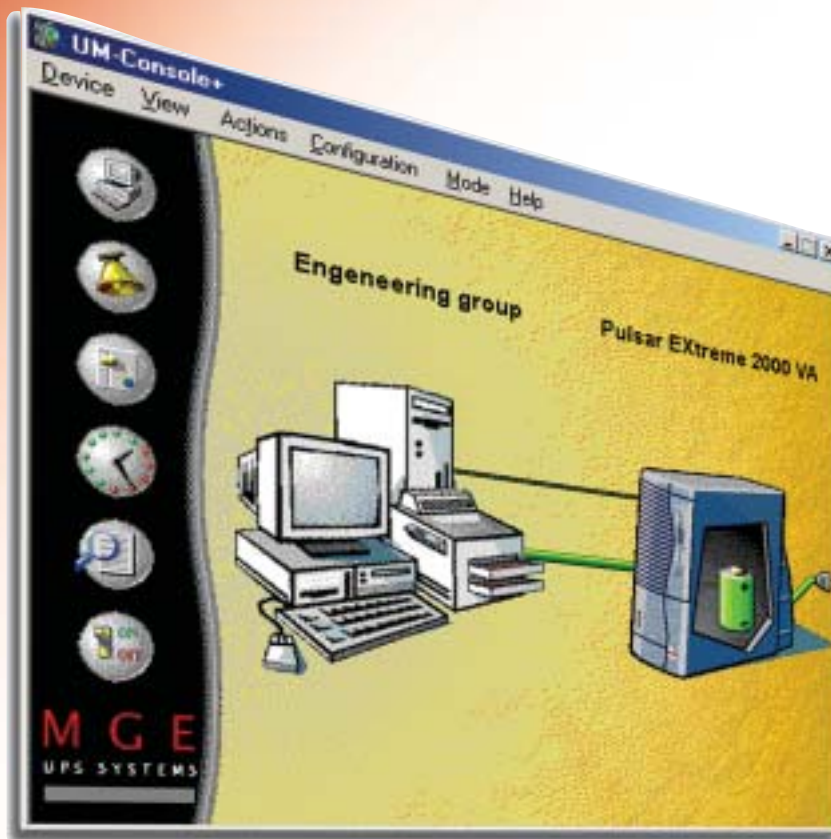


## Solution-Pac for WAN



### Power management for large companies

Solution-Pac for WAN is MGE UPS SYSTEMS' powerful suite of applications specifically designed to meet the Enterprise-wide power management needs of large corporations. Solution-Pac for WAN offers a graphical interface designed with ease of use in mind. This cutting edge solution is compatible with virtually all operating systems, from Windows to UNIX, and integrated SNMP agents make integration in an Enterprise Management Systems easy.

- ▶ Distributed architecture and unique cross-platform shutdown capabilities make Solution-Pac for WAN the leader in its field. And it comes standard with all MGE UPS SYSTEMS Pulsar UPSs (ES+ series and above).
- ▶ Multiple server shutdown in heterogeneous environments.
- ▶ Remote monitoring from any WAN console.
- ▶ Individual receptacle control.
- ▶ Exclusive distributed architecture.
- ▶ Supplied free of charge with every MGE UPS SYSTEMS network UPS.



THE UNINTERRUPTIBLE POWER PROVIDER

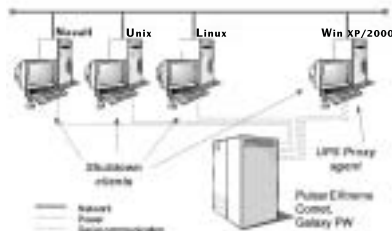
**MGE**  
UPS SYSTEMS

## ► MGE UPS SYSTEMS' exclusive distributed architecture

Solution-Pac for WAN is a suite of applications including SNMP proxy agents for UPS communication on the networks (UM-Agent), system shutdown software (UM-Client) and remote monitoring interfaces (UM-Console). Solution-Pac for WAN is built on the standard IETF MIB and TCP/IP. To avoid constant polling from each device, as is often the case with SNMP technology, MGE UPS SYSTEMS has implemented exclusive Trap Reception Acknowledgment technology that eliminates unnecessary network traffic and reduces the required bandwidth by up to 30%.

## ► Cross-platform shutdown capabilities

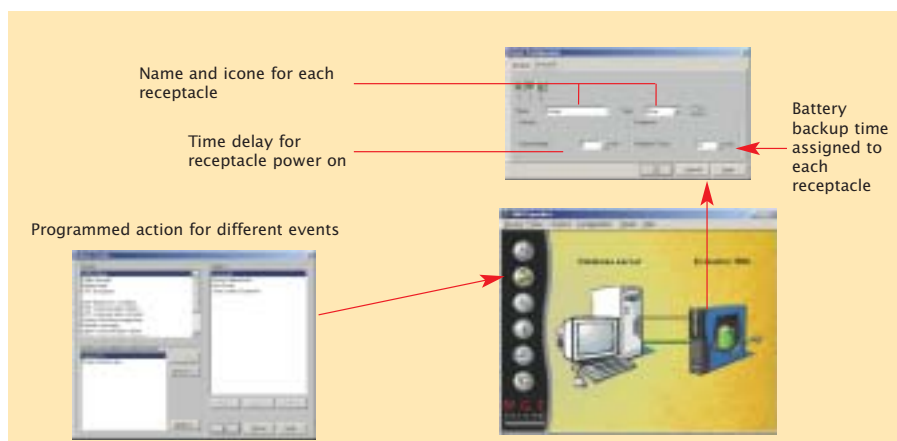
Traditional power management software products can only communicate with one operating system at a time. This prevents the network administrator from protecting a number of servers running different operating systems. Now, with Solution-Pac for WAN, power related information is broadcast over the entire network and client software on each server handles automatic system shutdown.



| Functions (1)  | Evolution | Extreme C Pulsar & Comet Extreme | Galaxy PW, Galaxy 3000 |
|--|-----------|----------------------------------|------------------------|
| <b>Graphical interface (windows)</b>   |           |                                  |                        |
| Automatic UPS icon installation  | ►         | ►                                | ►                      |
| Colour-coded statuses  | ►         | ►                                | ►                      |
| <b>Remote monitoring</b>   |           |                                  |                        |
| UPS status monitoring (2)  | ►         | ►                                | ►                      |
| SNMP management  | ►         | ►                                | ►                      |
| Event logging  | ►         | ►                                | ►                      |
| Voltage/frequency/load levels  | ►         | ►                                | ►                      |
| Password-protected "Administrator" mode  | ►         | ►                                | ►                      |
| <b>Automatic control</b>   |           |                                  |                        |
| Automatic system shutdown/reboot   | ►         | ►                                | ►                      |
| Multiple server shutdown in cross-platform environments                              | ►         | ►                                | ►                      |
| On/Off scheduling  | ►         | ►                                |                        |
| <b>Remote control</b>  |           |                                  |                        |
| Individual receptacle control by external PowerShare™ modules (up to 16 receptacles) | ►         | ►                                | ►                      |
| Individual receptacle control by built-in PowerShare™                                | ►         | <b>EXtremeC</b>                  |                        |

(1) Solution-Pac for Wan is backward compatible with most previous generations of intelligent UPSs from MGE UPS SYSTEMS and Merlin Gerin.

(2) Including battery and load levels, communication and charger status, overloads, UPS faults and more.



## ► Operating systems supported(1)

|                                   | Proxy Agent (UM-Agent) | Shutdown software (UM-Client) | Monitoring console (UM-Console+)(2) |
|-----------------------------------|------------------------|-------------------------------|-------------------------------------|
| Windows XP, 2000 (Intel)          | ►                      | ►                             | UM-Console +                        |
| Windows Me                        | ►                      | ►                             | UM-Console +                        |
| Windows 95/98                     | ►                      | ►                             | UM-Console +                        |
| Windows NT (Intel)                | ►                      | ►                             | UM-Console +                        |
| Windows NT (Alpha)                | ►                      | ►                             |                                     |
| Windows NT - TSE                  | ►                      | ►                             | ►                                   |
| Linux                             |                        |                               |                                     |
| Novell Netware                    | ►                      | ►                             |                                     |
| SCO Unix Open Server              | ►                      | ►                             | UM-Console                          |
| SUN Solaris PC & WS               |                        | ►                             |                                     |
| HP UX                             | ►                      | ►                             | UM-Console                          |
| IBM AIX                           | ►                      | ►                             |                                     |
| IBM OS/2 + Warp Connect           | ►                      | ►                             |                                     |
| IBM WIN OS/2 + Warp C.            |                        |                               | UM-Console +                        |
| IBM LanServer                     |                        | ►                             |                                     |
| Compaq Tru64/Digital Unix (Alpha) |                        | ►                             |                                     |
| Interactive Unix                  |                        | ►                             |                                     |

(1) The latest versions of our software can be downloaded free of charge from our Web site at [WWW.MGEUPS.COM/DOWNLOAD](http://WWW.MGEUPS.COM/DOWNLOAD).

(2) UM-CONSOLE+ FOR WINDOWS, UM-CONSOLE FOR UNIX

**MGE UPS SYSTEMS**

Headquarter  
140, avenue Jean Kuntzmann  
ZIRST - Montbonnot Saint Martin  
38334 St Ismier CEDEX - France  
Tel : (33) (0)4 76 18 30 00

MGE 0178 - FRO - 2

THE UNINTERRUPTIBLE POWER PROVIDER



Novell.

