



Pulsar PDU / Comet PDU Environment Sensor

Rack accessories to supervise and manage electrical connections inside the rack enclosure

Ease

Plug and play connection from your UPS to the secured devices.

By using the PDU rack version dedicated to your UPS power rating, you simplify the electrical connections inside your rack enclosure :

- ▶ No panelboard outside the rack enclosure.
- ▶ Structured cabling especially in case of dual cords servers.
- ▶ All position ears for vertical ,horizontal or wall mounting. 1 U or 2 U height.
- ▶ Large choice of sockets versions, according to the input of your equipment and your UPS output.



PDU range

Safe and reliable

- ▶ Overload protection with circuit-breakers.
- ▶ Cable locking system built-in for IEC sockets.

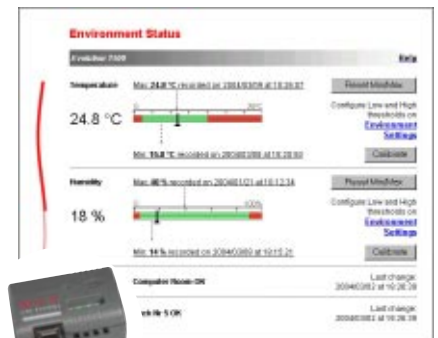
Supervision

- ▶ Environment Sensor supervises remotely two parameters: temperature level and humidity rate.
- ▶ 2 input contacts are available for additional supervision : door opening, genset start-up.
- ▶ The setting up of the alarm thresholds is achieved through the SNMP/Web card which is part of the MGE UPS communication card range.
- ▶ Environment sensor is compatible with all the MGE UPS ranges.
- ▶ Remote supervision is available through a simple Browser. It triggers an orderly shutdown of the secured equipment via your UPS.
- ▶ The traps are e-mail, pager and PDA sendable.

Various socket styles



Structured cabling, reliable connection.



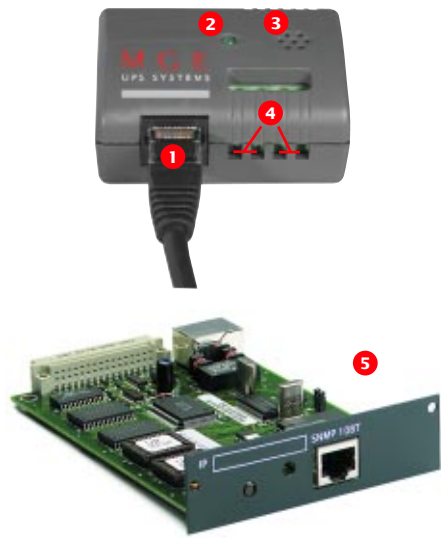
Temperature and humidity thresholds through Environment Sensor.

THE UNINTERRUPTIBLE POWER PROVIDER

MGE
UPS SYSTEMS

Specifications

	Pulsar PDU 10/16 A rack	Comet PDU 10/16 A rack
input		
Voltage	220-230-240-250 V (Ph + N)	
Input current rating	16 A	52 A
Connection and mounting		
Input	IEC C20 male inlet. 2 cables included (2 m length): - IEC C19 female/ IEC C14 male to connect to a IEC C13 UPS output - IEC C19 female/ IEC C20 male to connect to a IEC C19 UPS output	delivered with 0,5 m prewired cable for upstream terminal block connection. Possibility to remove this prewired cable to adapt a longer one if necessary
Mounting mode	vertical and horizontal rack mounting, wall mounting all position fixing plates	horizontal rack mounting, wall mounting all position fixing plates
Output		
FR socket model	(7) FR 16 A	
Schuko socket model	(7) DIN 16 A	
IEC socket model	(10) IEC C13 (2 groups of 5 sockets) 1 circuit-breaker for each socket group, cable locking system built-in.	(4) IEC C19 (2 groups of 2 sockets) + (8) IEC C13 (2 groups of 4 sockets)
Dimensions		
(H X W X D) in mm	44,5 (1 U) X 483 X 45	89 (2 U) X 483 X 90
Standard		
Safety and certification	CE, IEC 60 884-1 (FR model), IEC 60 320-1+EN 60 320-1 (IEC model) DIN 49 440-1+ DIN 49 440-5+ DIN 49 440-6 (Schuko model)	IEC 60 320
Operating temperature	0°C to 45°C	
Warranty	2 years	



- 1 Ethernet cat 5 cable for connection to SNMP/Webcard
- 2 Power indicator LED
- 3 Ambient temperature and humidity sensor
- 4 Mini terminal blocks for 2 voltage free contacts
- 5 MGE SNMP / Web card non included

	Environment sensor
input	
Temperature range measured	from 0°C to 80°C
Humidity rate range measured	from 10 % to 90 %
2 voltage free contacts	24 V DC
Supply	energized via the SNMP/Web card (not included) inserted in the UPS slot
Mounting	
Quick mounting	Double sided Velcro tape for easy mounting
Fixed mounting	1 screw for wall mounting or rack mounting
Output	
Physical link	3 m length Ethernet cable included.
SNMP alarms	traps user defined threshold
Remote web monitoring	view temperature/humidity/contact status
Dimensions and weight	
(L X W X D); weight	57.6 x 37.6 x 29.3 mm; 35 gr
Standard	
	CE, UL
Warranty	2 years

Part numbers	
Comet PDU IEC 10/16 A rack	66 857
Pulsar PDU IEC 10 A rack	66 854
Pulsar PDU FR 10/16 A rack	66 852
Pulsar PDU Schuko 10/16 A rack	66 853
Environment Sensor for SNMP webcard	66 846
2 power cable, length 1,90 m, 10 A, IEC C14 / IEC C13. Connection from the IEC C13 UPS output to the IEC C14 input equipment.	66 395
1 power cable, length 1,90 m, 16 A, IEC C20 / IEC C19. Connection from the IEC C19 UPS output to the IEC C20 input equipment.	66 396
2 power cable, length 1,90 m, 16 A, FR/Schuko male socket/ IEC C19. For connection to the IEC C20 input cords of the STS 16 A.	66 397

MGE UPS SYSTEMS

140, avenue Jean-Kuntzmann
ZIRST - Montbonnot Saint-Martin
38334 Saint-Ismier Cedex - France
Tél. : +33 (0)4 76 18 30 00

pdu_450uk

THE UNINTERRUPTIBLE POWER PROVIDER



As standards, specifications and designs change from time to time, please ask for confirmation of the information given in this publication. All the trademarks quoted belong to their respective owners. Publication: MGE UPS SYSTEMS, (January 2004) - Conception : Pamplonaise : +33 (0)4 79 37 87 66.