

AU *MERCURY* Series

For CATV UPS



MERCURY AU series UPS with its outstanding technology and design is capable of meeting nearly all cable television (CATV) and broadband network applications. It provides a reliable power source for a variety of monitoring system applications.

Features

- Constant Voltage Transformer Ferro-Resonant design
- Zero Transfer Time
- Optional Digital Networking Communication Interface
- Micro-Processor Control
- Optional LCD maintenance module
- Simple Flexible Installation
- Intelligent charger design
- Comply with safety standards UL1778, TUV, CE, FCC.



Introduction:

1. Available with various cabinet designs and modules to meet different environment requirement:

A. Bottom-Battery Cabinet

B. Upper-Battery Cabinet

C. UPS module

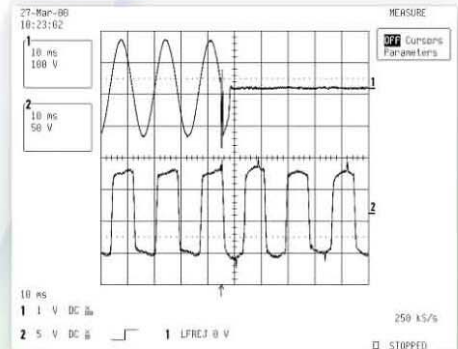


2. Constant Voltage Transformer-Ferro-Resonant (CVT) design:

A CVT is used in both AC input and battery backup mode and offers constant output voltage via Quasi Square Wave. It can reduce the risk of signal lost and ripple rate of the output voltage to stabilize output voltage.

3. Zero Transfer Time Function avoids data distortion during the transmission:

From AC mode changes to battery backup mode or battery backup mode to AC mode, ZTT (Zero Transfer Time) provides power for digitalize two-way transmission.



4. Micro-Processor based CPU provides precise control & monitoring of UPS self- diagnostics, functions, and status.
5. Total Modular Design enables ease of service and installation.
6. Battery Charging Management Model:
Intelligent Battery Charging Design will adjust the charging voltage, Auto Floating/Equalize control (It will automatically switch to equalize mode and recover in 8 hours later every 3 month) and regulated current protection, prolong battery life. Custom battery charging mode control and self-testing function. User-friendly status information is available from LCD display.
7. Special maintenance free DC magnetic breaker to the battery source and AC input fuse to protect machine.
8. Surge Protection device provides multi-level strike protecting components. Accredited by IEEE587 safety regulations.
9. Low Battery power off protection; if AC resumes to normal and can power on automatically, it can resume output and battery charging mode.
10. No power interruption to the load during maintenance.
11. Power generator inlet can keep UPS long-term operation by external power generator.
12. Simple flexible installation can be pole or wall mounted and floor standing.

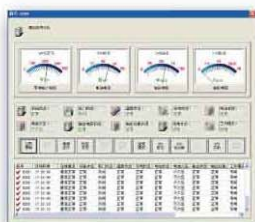
13. Optional LCD maintenance module - can adjudge easily faulty component directly and UPS is easy to maintain. On remote monitoring device can show UPS current conditions; including: Input Voltage, Output Voltage, Output Current, Battery Voltage, System Status, Charging mode indicator, LINE/INV model, Open-Door Status Inspection and Battery Storage Function.



Remote Infrared Monitoring Unit (SMLC)

14. Optional central monitoring software offers on-site service via Internet.
15. Optional Digitalize networking communication interface; it can monitor and manage CATV UPS from site to site:

Network Monitoring Management System ACOM100 can communicate with information of the CATV UPS and CATV network. In CATV network, it can monitor and manage all joints of the CATV network to achieve on-site real-time monitoring the information about UPS. ACOM100 system can make UPS management intelligently, automatically and improve on-site control ability to accomplish convenience, accuracy, safety, reliability and low-cost for power management. ACOM100 was developed for reaching this important task.



- ACOM100 can centralize and monitor user's network interface card powering by CATV UPS (AU series) and save the information of the UPS into database.
- Real-time intelligent CATV UPS power failure warning and displaying aposematic icon, sound etc. to alert users. It can also simultaneously store the data into database for further reference or analysis.
- ACOM100 can manage the UPS power failure warning sequentially to ensure control center can receive the warning alert immediately.
- ACOM100 can monitor each CATV UPS power condition, real-time activity and records for on-site service conveniently.
- ACOM100 can meet user's requirements to assemble (partial or whole section) intelligent CATV UPS power source on the network during on-site service.
- ACOM100 can search the chosen intelligent CATV UPS power source in different time, even of UPS records.
- For the easy management, network communication status of each intelligent CATV UPS power source will show on display.
- ACOM100 can modify the CATV UPS power source from site to site securely.
- ACOM100 can record and search the data of the UPS in different time to provide system manager analyzing data.
- Monitoring as many as 253 UPS units.

16. We provide optional interface cards for CATV UPS; it can communicate with most international CATV Company's Internet monitoring systems available:

Widely established CATV networks can monitor all equipment on the branch line (UPS source is only the part of equipment of the network) to accomplish system integration. AU series UPS is part of all CATV network management system and it can easily integrate with all major network system software available.

17. Temperature control by fan:

When the chassis is over heat (55°C), the fan will auto-start to reduce temperature. This function can extend the fan life and reduces noise.

Specification

Model		AU606	ASU609	AU615
Input	Voltage	160~280Vac		
	Frequency	50HZ±3HZ(60HZ±3HZ)		
Output	Voltage	60Vac		
	Frequency	50Hz±1Hz(60Hz±1Hz)		
	Current	6A	9A	15A
	Wave Form	Quasi Square Wave		
Voltage Stabilized Rate	AC Mode	60Vac±2%		
	Inverter Mode	60Vac±5%		
Transfer Time	AC to Inverter Mode	0ms(AC TO DC)		
	Inverter to AC Mode	0ms(DC TO AC)		
Backup Time		2~8Hr		
Efficiency	AC Mode	>85%		
	Backup Mode	>80%		
LED Indicator		AC mode, INV mode, System Checking, Float/Equalize mode, Self testing, Battery Status, Battery Low Voltage		
Charging Temp Compensation		-0.09V/°C		
Over Load Capability		150%		
Protections:	Over Load	Current limited and Auto recovery (AC mode); Auto Shutdown Protection (Inverter mode)		
	Over Heat	LED Alert (AC mode), Auto Shut Down Protection (Inverter mode)		
	Short Circuit	Current limited and Auto recovery (AC mode); Auto Shutdown Protection (Inverter mode)		
Operating Temp		-25°C~+60°C		
Strike Protection		EN61000-4-5 (6KV)		
Static Protection		EN61000-4-2 (8KV)		
Surge Interruption		EN61000-4-4 (4KV)		
EMI Interruption		EN55022 Level B		
Upper-Battery Cabinet				
	Size(H×W×D)	465x599x333mm	465x599x333mm	465x639x333mm
	Weight (excluding battery)	26Kgs	29Kgs	33Kgs
Lower-Battery Cabinet				
	Size(H×W×D)	515x639x477mm	515x639x477mm	515x639x477mm
	Weight(excluding battery)	31Kgs	34Kgs	38Kgs
UPS Module				
	Size(H×W×D)	176x443x307mm	176x443x307mm	176x443x307mm
	Weight (excluding battery)	19Kgs	22Kgs	25Kgs

 **Ablerex** UIS ABLER ELECTRONICS CO., LTD.

1F., No.3, Lane 7, Paokao Rd., Hsintien 23114
 Taipei Hsien, Taiwan R.O.C.
 TEL:886-2-2917-6857
 FAX:886-2-2913-1705
<http://www.ablerex-ups.com>
<http://www.uisabler.com.tw>
 e-mail:uisabler@uisabler.com.tw

